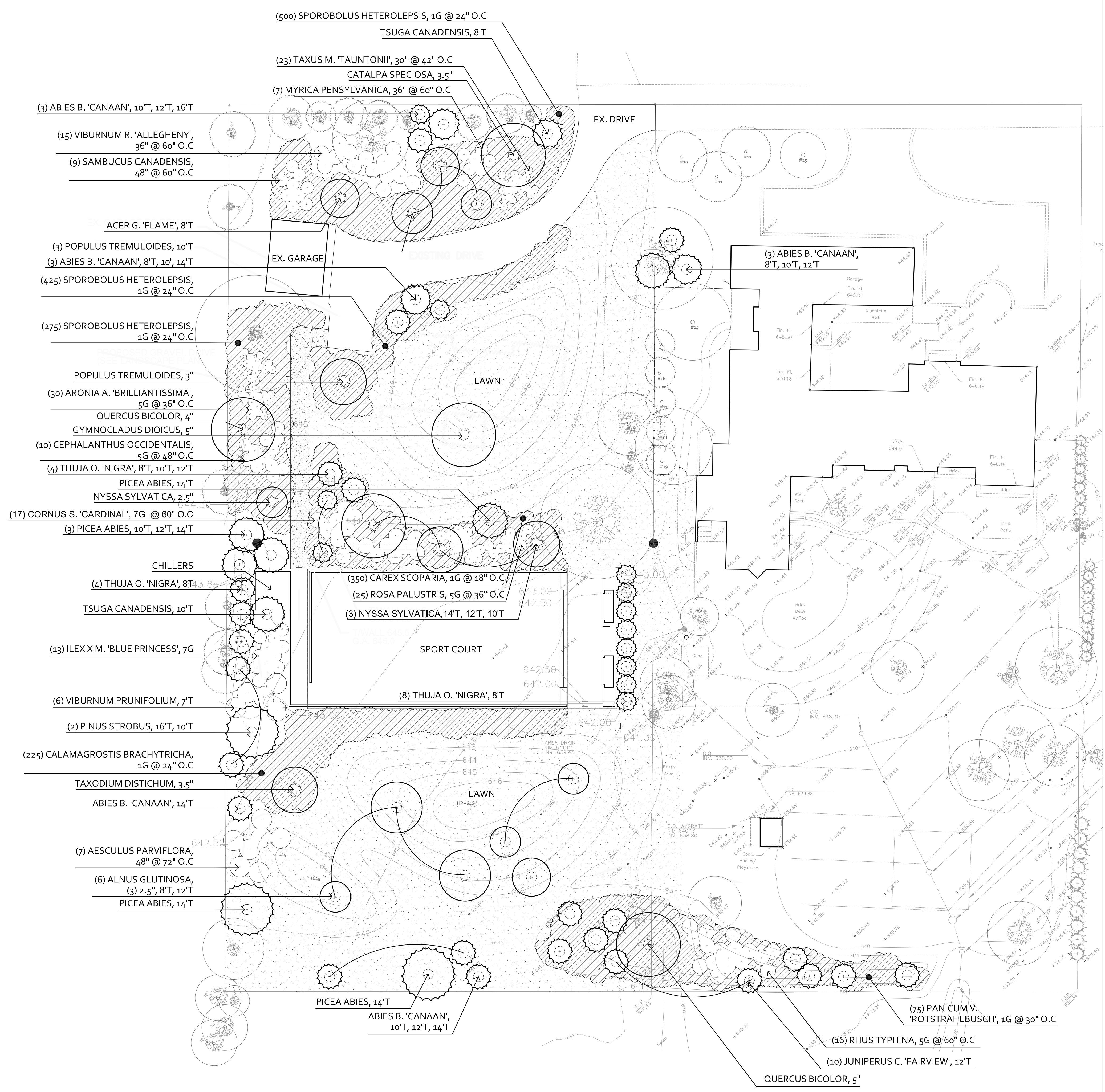


ARCHITECTURAL  
COMMISSION  
REVIEW



| PLANT SCHEDULE                                      |      |     |
|---|------|-----|
| Evergreen Trees:                                    | Size | Qty |
| <i>Abies b. 'Canaan'</i><br>CANAAN FIR              | 8'   | 2   |
| <i>Abies b. 'Canaan'</i><br>CANAAN FIR              | 10'  | 4   |
| <i>Abies b. 'Canaan'</i><br>CANAAN FIR              | 12'  | 3   |
| <i>Abies b. 'Canaan'</i><br>CANAAN FIR              | 14'  | 3   |
| <i>Abies b. 'Canaan'</i><br>CANAAN FIR              | 16'  | 1   |
| <i>Picea abies</i><br>NORWAY SPRUCE                 | 10'  | 1   |
| <i>Picea abies</i><br>NORWAY SPRUCE                 | 12'  | 1   |
| <i>Picea abies</i><br>NORWAY SPRUCE                 | 14'  | 3   |
| <i>Pinus strobus</i><br>EASTERN WHITE PINE          | 10'  | 1   |
| <i>Pinus strobus</i><br>EASTERN WHITE PINE          | 16'  | 1   |
| <i>Thuja o. 'Nigra'</i><br>DARK AMERICAN ARBORVITAE | 8'   | 14  |
| <i>Thuja o. 'Nigra'</i><br>DARK AMERICAN ARBORVITAE | 10'  | 1   |
| <i>Thuja o. 'Nigra'</i><br>DARK AMERICAN ARBORVITAE | 12'  | 1   |
| <i>Tsuga canadensis</i><br>CANADIAN HEMLOCK         | 8'   | 2   |
| <i>Tsuga canadensis</i><br>CANADIAN HEMLOCK         | 10'  | 2   |
| Deciduous Trees:                                    |      |     |
| <i>Acer g. 'Flame'</i><br>FLAME AMUR MAPLE          | 8'   | 1   |
| <i>Alnus glutinosa</i><br>COMMON ALDER              | 2.5" | 3   |
| <i>Alnus glutinosa</i><br>COMMON ALDER              | 8'   | 2   |
| <i>Alnus glutinosa</i><br>COMMON ALDER              | 12'  | 1   |
| <i>Catalpa speciosa</i><br>NORTHERN CATALPA         | 3-5" | 1   |
| <i>Gymnocladus dioicus</i><br>KENTUCKY COFFEE TREE  | 5"   | 1   |
| <i>Nyssa sylvatica</i><br>BLACK TUPELO              | 2.5" | 1   |
| <i>Nyssa sylvatica</i><br>BLACK TUPELO              | 10'  | 1   |
| <i>Nyssa sylvatica</i><br>BLACK TUPELO              | 12'  | 1   |
| <i>Nyssa sylvatica</i><br>BLACK TUPELO              | 14'  | 1   |
| <i>Populus tremuloides</i><br>QUAKING ASPEN         | 3"   | 1   |
| <i>Populus tremuloides</i><br>QUAKING ASPEN         | 10'  | 3   |
| <i>Quercus bicolor</i><br>SWAMP WHITE OAK           | 4"   | 1   |
| <i>Quercus bicolor</i><br>SWAMP WHITE OAK           | 5"   | 1   |
| <i>Taxodium distichum</i><br>BALD CYPRESS           | 3-5" | 1   |

| Evergreen Shrubs:   |     |      |
|---|-----|------|
| <i>Taxus media 'Tauntonii'</i><br>TAUNTON INTERMEDIATE YEW          | 30" | 23   |
| <i>Juniper chinensis 'Fairview'</i><br>CHINESE JUNIPER              | 12' | 10   |
| Deciduous Shrubs:   |     |      |
| <i>Aesculus parviflora</i><br>BOTTLEBRUSH BUCKEYE                   | 4'  | 7    |
| <i>Aronia arbutifolia 'Brilliantissima'</i><br>RED CHOKEBERRY       | 5G  | 30   |
| <i>Cephalanthus occidentalis</i><br>BUTTONBUSH                      | 5G  | 10   |
| <i>Cornus sericea 'Cardinal'</i><br>RED TWIG DOGWOOD                | 7G  | 17   |
| <i>Ilex meserveae 'Blue Princess'</i><br>BLUE HOLLY                 | 7G  | 13   |
| <i>Myrica pensylvanica</i><br>NORTHERN BAYBERRY                     | 36" | 7    |
| <i>Rhus typhina</i><br>STAGHORN SUMAC                               | 5G  | 16   |
| <i>Rosa palustris</i><br>SWAMP ROSE                                 | 5G  | 25   |
| <i>Sambucus canadensis</i><br>AMERICAN ELDER                        | 36" | 9    |
| <i>Viburnum prunifolium</i><br>BLACKHAW VIBURNUM                    | 7'  | 6    |
| <i>Viburnum rhytidophylloides 'Allegheny'</i><br>ALLEGHENY VIBURNUM | 36" | 15   |
| Grasses:  |     |      |
| <i>Calamagrostis brachytricha</i><br>KOREAN FEATHER REED GRASS      | 1G  | 225  |
| <i>Carex scoparia</i><br>POINTED BROOM SEDGE                        | 1G  | 350  |
| <i>Panicum virgatum 'Rotstrahlbusch'</i><br>RED SWITCH GRASS        | 1G  | 75   |
| <i>Sporobolus heterolepsis</i><br>PRAIRIE DROPS EED                 | 1G  | 1200 |